



Micro AMP 4 mkII

Micro AMP 4/2

**4-channel amplifiers
for headphones**



USER MANUAL

SUMMARY

A - Safety instructions.....	P1
B - Product information.....	P3
1 - Product presentation	P4
2 - Installation	P4
3 - Connection	P5
4 - Characteristics.....	P5

ID-AL products are exclusively manufactured by Waves System in France

LA VILLE EN BOIS - 44830 BOUAYE - FRANCE

Sales and informations: +33 2 40 78 22 44

E-mail : info@id-al.com - Web site: <http://www.id-al.com>

Technical department : support@wssystem.com

Technical support :

For a detailed list of the technical support options, we suggest you to visit our site www.id-al.com.

Information in this manual is subject to change without notice and do not represent any commitment from Waves System. The equipment described in this manual is supplied under condition of the terms of license specifying the legal use conditions. This manual can't be reproduced or used, in whole or in part, in any form and by any mean, for other use than private, without the written permission from Waves System.

ID-AL is a trademarks of Waves System.

CAUTION! DO NOT EXPOSE TO HUMIDITY & DUST!

Unplug the power supply cable before any servicing

FOR YOUR SAFETY, PLEASE READ THE USER'S GUIDE CAREFULLY BEFORE OPERATING YOUR PLAYER.

A. SAFETY INSTRUCTIONS

A.1 CE marking

The CE marking is found on the nameplate, at the rear side of the device. It certifies the conformance of the device with the low voltage CE Directive, according to the EN 55022 standard, and the Electromagnetic Compatibility Directive 61000-4-x.

A.2 Directives

- The requirements related to the electromagnetic compatibility and low voltages directive are met.

This device is granted a certification of conformity assessment only under the condition that this is used for industrial environment. We advise that if installed for usage in home environment, the electronic interference might take place.

A.3 Overview

- The user manual is an integral part of the product. It must always be kept handy & close by. Proper usage conforming to the product intended purpose involves strict compliance with the instructions given in this manual.

In the event of return of the equipment, the user manual should be handed over to the new purchaser. The staff should receive instructions concerning the proper usage of the device.

- Only usage of genuine parts ensures perfect safety for the user and correct operation of the device. Moreover, only accessories mentioned in the technical documentation or explicitly approved by the manufacturer must be used. In the event of usage of accessories or consumable products from other brands, the manufacturer cannot stand guarantee for the correct and safe operation of the device.
- Damages caused through usage of accessories or consumable products from other brands will not entail right to any benefit under the terms of warranty.
- The manufacturer will be liable for the safety, reliability and functioning of the product as long as the assembly, settings, modifications, extensions and repairs have been carried out by the manufacturer or a company approved by the manufacturer and if the device is used in accordance with the instructions mentioned in this manual.
- The player complies with the technical safety standards in force at the date of print of this manual. All rights reserved for the electrical diagrams, procedures, names and devices mentioned herein.
- Any reproduction of the technical documentation, even partially, without the written authorization from Waves System is prohibited.

A.4 General Safety instructions

This device has been shipped out from our facilities in perfect working condition. In order to preserve these conditions, for safety and to avoid any risk of accidental bodily injury, the user must imperatively follow the safety instructions and read the 'Caution!' messages included in this manual.

This device, made by Waves System, has been designed in a way that practically eliminates any risk if it is used in accordance to its intended purpose. Nevertheless, with a concern for safety, we would like to draw your attention to the following instructions:

- When using the device, comply with all local rules and regulations in force. Any modification or conversion of the device automatically entails loss of the homologation. The operation of a modified device is liable to a penalty. In the interest of occupational safety, the operator and the user are held responsible for complying with the regulations.
- Keep the original packing for a possible product re-shipment. Also ensure to keep the packing material out of children's reach. Only this original packing ensures optimal protection for the product during transportation. If a product reshipment appears to be necessary during the guarantee period, Waves System is not liable for any ensuing damages arising during the transportation and attributable to a defective packing.
- This device is used to broadcast video and audio files. It should be used only by persons whose training or knowledge ensures proper handling.
- Before every use, the operator must check that the device is in perfect working condition.
- This product must not be used in places where there is a potential explosion risk. Besides, it must neither be used in an environment favouring combustion nor in a humid or excessively hot or cold location.

A.5 Safety instructions against risks due to electric currents

- The device must be connected to a grounded AC power outlet or a European standard outlet installed as per good professional practices.
- Before connecting the device, check that the power supply voltage and frequency match the specifications indicated on the device.
- Before powering, check that the device and cables are not damaged. Damaged cables and connections must immediately be replaced.
- Never allow the power cords to come in contact with other cables. Handle the power supply cable as well as all other cables connected to the mains with extreme care.
- Always connect the plug-in connector in the end. Ensure that the On/Off switch is in 'Off' position before connecting the device to the mains. The mains outlet must remain accessible after the installation.
- Check the device and its power supply cable from time to time. Disconnect the device from the mains when it is no longer used or for the purpose of maintenance.
- Handle the power cord by using the plug-in connector only. Never remove the plug-in connector by pulling the power cord.
- Electrical connection, repairs and maintenance must be carried out by qualified personnel.
- Do not switch on or switch off the device within a short span of time as this will reduce equipment life.

A.6 - Terms of use:

- This product has been designed for indoors use only.
- If this device has been exposed to very high temperature fluctuations (e.g.: after transportation), do not connect it immediately. The condensation formed inside the device could damage it. Allow the device to attain ambient temperature before connecting it.
- Do not shake the device, avoid sudden movements during its installation or handling.
- When selecting the spot for installation of the player, ensure that it is not exposed to a high source of heat, humidity or dust. There should not be any cables lying around as they might jeopardise your & others safety.

B. PRODUCT INFORMATION

B.1 Correct usage

The Micro AMP 4 mkII and Micro AMP 4/2 are audio amplifier to be used with audio headphone. Correct usage involves compliance with the instructions given in this manual as well as with the requirements concerning installation.

B.2 Incorrect usage

Any other usage or usage beyond the scope of this application is considered as incorrect usage. The manufacturer shall not be liable for the damages ensuing from it. The user shall bear full responsibility for the risks incurred.

B.3 Delivery details

- Micro AMP 4 mkII or Micro AMP 4/2
- External power supply and its power supply cable
- User manual

B.4 Specifications

Models: Micro AMP 4 mkII or Micro AMP 4/2
Nominal electrical values of the power supply connection:
Voltage (V) 100 to 240
Frequency (Hz) 50-60
For details see Annexe B

B.5 Installation

The device must be installed in a dust free area.

Do not install the device directly against a wall. To avoid overheating, the ventilation openings must not be blocked. Take care to leave an empty space above the ventilation slits.

B.6 Electrical connection

Before activation, check whether the mains voltage matches with the voltage indicated on the rating plate. sur la plaque signalétique.

1 - Product presentation

The Micro AMP 4 mkII and Micro AMP 4/2 are 4-channel amplifiers for headphones capable of delivering a continuous power of 250mW under 8 Ohms with 0.1% THD + N.

The Micro AMP 4/2 allows to select one or the other of the 2 audio inputs by a contact with a push button to assign it to two groups of 2 headphones.

2 - Installation



Micro AMP 4 mkII and Micro AMP 4/2

- 1 - Volume
- 2 - Power indicator



Micro AMP 4 mkII

- 3 - 12 V Power supply input
- 4 - Audio input
- 5 - Headphone output



Micro AMP 4/2

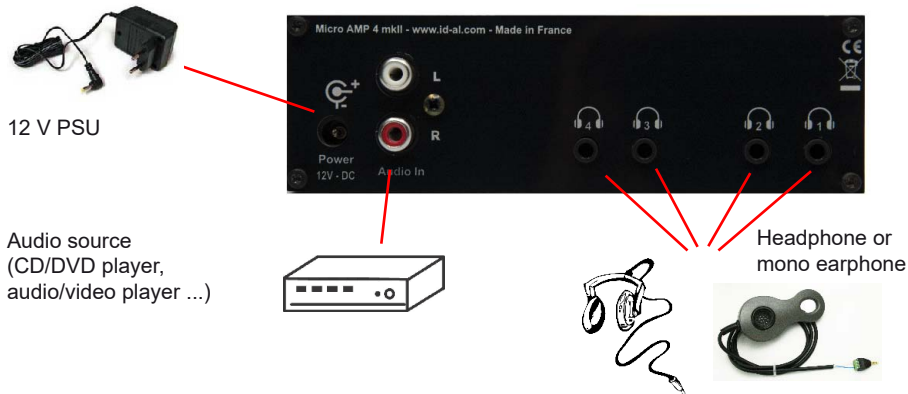
- 3 - 12 V Power supply input
- 4 - Audio input 1
- 5 - Audio input 2
- 6 - Input selector - group B
- 7 - Headphone output group B1/B2
- 8 - Input selector - group A
- 9 - Headphone output group A1/A2

Power supply: If you need to power the Micro AMP 4 mkII or Micro AMP 4/2 from a regulated and filtered power supply or a battery, you must respect the recommended voltage of 12V continuous although the amp can be powered between 7V and 15V.

DC 2.1mm / 5.5mm connector - Positive in the center.

3 - Connexion

Micro AMP 4 mkII



Micro AMP 4/2



Pressing SW1 selects input 1 for the A1 and A2 group headphone outputs
 Pressing SW2 selects input 2 for the A1 and A2 group headphone outputs

Pressing SW3 selects input 1 for headphone outputs of group B1 and B2
 Pressing SW4 selects input 2 for headphone outputs of group B1 and B2

4 - Characteristics

- 4 channels audio amplifier for 4 headphones
- Volume on each channel
- 2x375mW / 8 Ohms per channel (THD 10%)
- Thermal protection
- 8 to 32 Ohms load
- Size MA mkII (WxDxH): 140 mm x 97 mm x 43 mm
- Taille MA 4/2 (WxDxH): 140 mm x 105 mm x 43 mm
- Weight: 250g
- Power: 12 V - 200 mA



**Design and manufacturing of interactive
audio and video players**

**Check our products, informations
and technical solutions on our website:
www.id-al.com**