

Tile Series Card Holder Panel

HDL-MP1-W-CARD/TILE.48

Datasheet
Version: V2.1

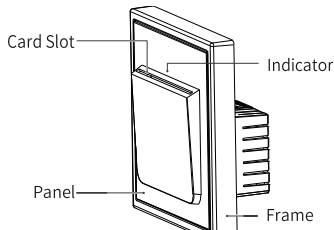


Figure 1

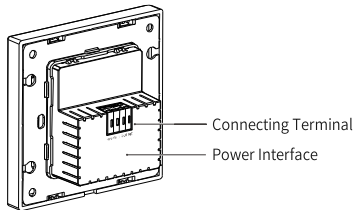


Figure 2

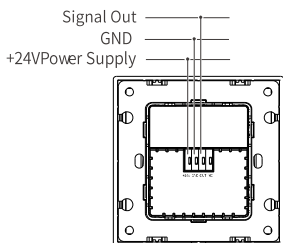


Figure 3

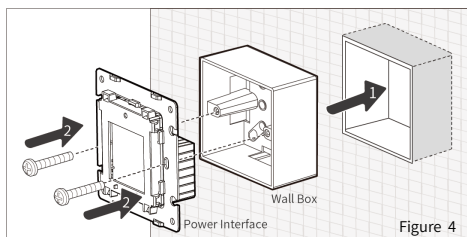


Figure 4

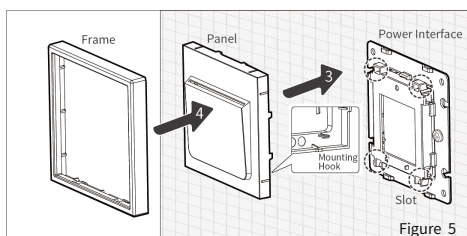


Figure 5

Overview

Tile Series Card Holder Panel (hereinafter referred to as the “product” or “device”) adopts dry contacts as communication method. The product is a special switch, into which the guest places his/her hotel card immediately after entering the room. This turns on the electricity in the hotel room. After the guest removes the card upon leaving the room, the electricity in the room is automatically off. Please note that the type of card available for the product is M1 card with high frequency.

Note: The pictures in this datasheet are for reference only and the actual product should prevail.

Please read the datasheet carefully before use.

Appearance

See Figure 1 & 2



Safety Precautions

- The installation and testing for the product must be carried out by HDL Automation Co., Ltd. (hereinafter referred to as HDL) or its appointed service agencies. The electric construction shall comply with local laws and safety regulations.
- HDL will not be responsible for any consequence caused by the inexpert or faulty installation and wiring methods, which are not in accordance with the instructions contained in this datasheet.
- Please do not privately disassemble or replace any parts of the product. Otherwise, it may cause mechanical fault, electric shock, fire or personal injuries.
- Please contact HDL after-sales departments or our designated service agencies for your maintenance service. Product failures caused by private disassembly are not subject to the warranty.
- Prior to performing installation or disassembly on the device, disconnect the device from all voltage sources.
- It is a MUST to install the device with wall box.
- Do not use corrosive liquid to wipe the device body, especially the interface, so as to avoid damage to the device.
- Do not wipe the device with damp cloth.
- Prior to performing maintenance or cleaning on the device, disconnect the device from all voltage sources, so as to avoid electric leakage and electric shock.

Wiring

See Figure 3

⚠ Note: NC interface is reserved for future use, please do not use for wiring.

Regarding OUT interface, please note that the electric level for signal out is 3.3V.

In case of incorrect wiring, please note to connect the wires with the connecting terminals accordingly.

Installation



Tips: Before installation, if the panel is still assembled with power interface, please remove the panel by following the instructions in the section *Disassembly*.



Warning: Prior to performing installation on the device, disconnect the device from all voltage sources.

For installation, please see Figure 4 & 5 and the following instructions.

Step 1. Place the wall box into the proper wall body.

⚠ Note: Before installation, please get the necessary cables ready in the wall box.

Only 86-type wall box is available for installation. The depth of wall box should be ≥ 50 mm.

Step 2. Fix the power interface into the wall box with screws.

Step 3. Align the mounting hook with the slot, then assemble the panel onto the power interface.

Step 4. Assemble the frame onto the panel.

⚠ Note: Before powering on, please ensure the device is tightly onto the wall body.

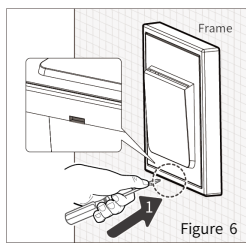


Figure 6

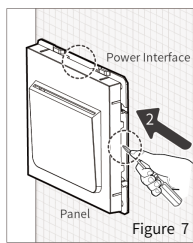


Figure 7

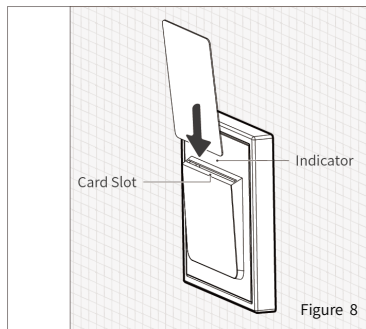


Figure 8

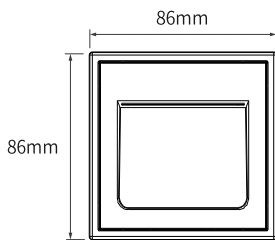


Figure 9

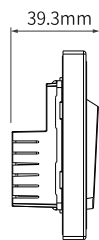


Figure 10



2 gang



3 gang



4 gang

Figure 11

▲ Note: The panels with plastic frames can be only installed horizontally.

Frame Name	Frame Type	Gang	Dimensions (W X H X D)
2/3/4-gang frames	Plastic	2 gang	172 X 86 X 10.5(mm)
		3 gang	258 X 86 X 10.5(mm)
		4 gang	344 X 86 X 10.5(mm)

Disassembly

▲ Warning: Prior to performing disassembly on the device, disconnect the device from all voltage sources.

For disassembly, please see Figure 6 & 7 and the following instructions.

- Step 1. It is recommended to use a screwdriver to loosen the frame from the opening.
- Step 2. It is recommended to place a screwdriver between the gap of the panel and power interface, then loosen the panel.
- Step 3. To remove the panel and power interface, please refer to the reverse steps in the section *Installation*.

Operation

As shown in Figure 8, the device is configured with one indicator.

Make the device power-on, then insert the hotel card into card slot, the indicator is on; withdraw the card, the indicator is off.

Technical Data

Rated voltage	24V DC
Rated current	11.3mA
Type of card	M1 card with high frequency
Working frequency of the card	13.56 MHz
Working temperature	-5°C~45°C
Working relative humidity	≤90%
Storage temperature	-20°C~60°C
Storage relative humidity	≤93%

Specifications

Dimensions (W X H X D)	86×86×39.3 (mm) (with plastic frame) (see Figure 9 & 10)
Housing material	Flame-retardant PC
Installation	Wall box (see Figure 4 & 5)
Protection rating (Compliant with EN 60529)	IP20

Packing List

Tile Series Card Holder Panel *1 / Screw*2 / Datasheet*1

Technical support

E-mail: hdtickets@hdlautomation.com

Website: <https://www.hdlautomation.com>

HDL has all the intellectual property rights to this document and contents thereof. Reproduction or distribution for third parties are prohibited without written authorization from HDL. Any infringement of HDL's intellectual property rights will be investigated the legal liability.

The contents of this document will be updated as the updates of product versions or other reasons. Unless otherwise agreed upon, this document is to be used as a guidance only. All the statements, information and recommendations in this document makes no warranty expressed or implied.

© 2023 HDL Automation Co., Ltd. All rights reserved.