

Overview

iTouch Series (see Figure 1-3) enables control of switching, dimming, scenes, curtains, etc. With built-in RGB backlight, the color of each button can be set. In addition, the color of the glass surface and icons can be customized.

Functions

- Built-in temperature sensor.
- Available with 2/4/6 buttons.
- The backlight color of each button can be customized.
- Control types: Switch control, Dimming control, Shutter control, Flexible control, Scene control, Sequence control, Percentage control, Threshold control, String(14bytes) control, Alternate control, Pulse control, RGB control, Fan control, Combination control.
- Supports backlight brightness setting, button lock and button trigger.

Important Notes

- The panel must be wall box mounted.
- The panel should work in conjunction with the power interface (M/PCI.3-A).
- The device meets KNX guidelines and the parameters are set by the Engineering Tool Software (ETS).

Product Information

Dimensions - See Figure 4 - 9

- A1. Control Button:** Controls targets.
- A2. Communication Interface:** Connects to panel power interface.
- A3. Mounting slot:** Connects to panel power interface.

Programming - After long pressing two buttons (e.g. Button A & B in Figure 4, Button A & D in Figure 5 or Button A & E in Figure 6) at the same time for 2 seconds, LED indicators flash cyclically and the panel enter programming mode.

Product installation and disassembly

Installation - See Figure 10 - 12

- Step 1. Install the wall box in the wall.
- Step 2. Fix the power interface onto the wall box with screws.
- Step 3. Hold the edge of panel, and insert the panel in the slots of power interface vertically.

Disassembly - See Figure 13

- Step 1. Insert a straight screwdriver into the gap between the panel and power interface.
- Step 2. Hold the panel, pry up the panel gently and take down the panel.

Safety Precautions

- The installation and commissioning of the device must be carried out by HDL or the organization designated by HDL. For planning and construction of electric installations, the relevant guidelines, regulations and standards of the respective country are to be considered.
- The device should be wall box mounted. HDL takes no responsibility for all consequences caused by installation and wire connection which are not in accordance with this document.
- Please do not privately disassemble the device or change components, otherwise it may cause mechanical failure, electric shock, fire or body injury.
- Please resort to our customer service department or designated agencies for maintenance service. The warranty is not applicable for the product fault caused by private disassembly.

Package Contents

M/TBP2(4/6).1*1 / Datasheet*1

产品概述

简约S/2(4/6)按键触控面板(见图1-3)每个触摸按键内置RGB背光,可设置任意的颜色来满足顾客的需求。面板为玻璃材质,颜色及图案可以定制。可实现对开关、调光、场景和窗帘等的控制。

功能说明

- 内置温度传感器
- 具有2/4/6个触摸按键
- 每个触摸按键内置RGB背光,可设置任意的颜色
- 控制类型:开关控制、调光控制、窗帘控制、灵活控制、场景控制、序列控制、百分比控制、阈值控制、字符串控制(14字节控制)、交替控制、脉冲控制、RGB控制、风扇控制、组合控制
- 支持背光亮度设置、按键锁定、按键触发

注意事项

- 面板必须暗盒安装。
- 必须与面板电源接口模块(M/PCI.3-A)配合使用。
- 本设备属于KNX标准设备,使用ETS软件进行编程。

产品信息

产品尺寸 - 见图 4-9

- A1. 控制按键:** 控制目标的状态。
- A2. 通信接口:** 连接面板电源底座。
- A3. 卡扣:** 连接面板电源底座。

编程 - 如图4-6所示,同时长按按键(M/TBP2.1:A和B键,M/TBP4.1:A和D键,M/TBP6.1:A和E键)约2秒,LED指示灯循环闪烁,则进入编程模式。

设备的安装和拆卸

安装 - 见图 10-12

- 步骤1. 将底盒安装在墙上。
- 步骤2. 用螺丝将电源接口模块固定在底盒里。
- 步骤3. 手持面板边缘,对准卡口,垂直插入电源接口模块,不可过分用力按压面板。

拆卸面板 - 见图 13

- 步骤1. 用一字螺丝批插入面板缺口。
- 步骤2. 手握面板边缘,轻撬面板,即可取下面板。

安全警告

- 本设备的安装及调试工作必须由我司或我司指定的机构进行。其电气安装的计划和施工,必须遵守当地相关的安全标准和法规。
- 该产品需暗盒安装,未按照本说明书进行安装及接线方式的,所造成的一切后果皆与我司无关。
- 请不要私自拆装或更换零部件,否则可能会导致机械故障、电击、火灾或身体伤害。
- 请将一切维修工作交由我司售后部门或指定机构进行,本产品的保修范围不适用于因用户拆卸产品而导致的故障。

装箱清单

M/TBP2(4/6).1*1 / 说明书*1

Technical Data

Electrical Parameters

Working voltage	21~30V DC
Working current	M/TBP2.1: 13mA / 30V DC M/TBP4.1: 10mA / 30V DC M/TBP6.1: 10mA / 30V DC
Communication	KNX
KNX terminal	0.6 - 0.8mm single core cable

External Environment

Working temperature	-5°C~45°C
Working relative humidity	≤90%
Storage temperature	-20°C~60°C
Storage relative humidity	≤93%

Specifications

Dimensions	116.5×86×10.5(mm) (Regular) 126.5×96×10.5(mm) (Larger)
Net weight	133g (Regular) 164g (Larger)
Housing material	Glass, PC, ABS, Aluminum
Installation	Wall box (See Figure 10 - 12)
Protection rating (Compliant with EN 60529)	IP20

Name and Content of Hazardous Substances in Products

Components	Hazardous substances					
	Lead (Pb)	Mercury (Hg)	Cadmium (Cd)	Chromium VI (Cr (VI))	Poly-brominated biphenyls (PBB)	Poly-brominated diphenyl ethers (PBDE)
Plastic	o	o	o	o	o	o
Hardware	o	o	o	o	-	-
Screw	o	o	o	x	-	-
Solder	x	o	o	o	-	-
PCB	x	o	o	o	o	o
IC	o	o	o	o	x	x
Glass	o	o	o	o	o	o

The symbol "-" indicates that the hazardous substance is not contained.

The symbol "o" indicates that the content of the hazardous substances in all the homogeneous materials of the component is below the limit requirement specified in the Standard IEC62321-2015.

The symbol "x" indicates that the content of the hazardous substance in at least one of the homogeneous materials of the part exceeds the limit requirement specified in the Standard IEC62321-2015.

KNX Cable Guide

KNX	KNX cable
-	Black
+	Red

技术参数

电气参数

工作电压	21~30V DC
工作电流	M/TBP2.1: 13mA / 30V DC M/TBP4.1: 10mA / 30V DC M/TBP6.1: 10mA / 30V DC
通信协议	KNX
KNX总线接线端子	0.6 - 0.8mm单芯电缆

外部环境

工作温度	-5°C~45°C
工作相对湿度	≤90%
储存温度	-20°C~60°C
储存相对湿度	≤93%

产品规格

尺寸	116.5×86×10.5(mm) (通常) 126.5×96×10.5(mm) (加大)
净重	133g(通常) 164g(加大)
外壳材料	玻璃, PC, ABS, 压铸铝
安装方式	暗盒安装 (见图10-12)
防护级别 (符合 EN 60529)	IP20

产品中有害物质的名称及含量

部件名称	有害物质					
	铅 (Pb)	汞 (Hg)	镉 (Cd)	六价铬 (Cr (VI))	多溴联苯 (PBB)	多溴二苯醚 (PBDE)
塑胶组件	o	o	o	o	o	o
五金铜件	o	o	o	o	-	-
螺丝组件	o	o	o	x	-	-
焊锡	x	o	o	o	-	-
PCB组件	x	o	o	o	o	o
IC	o	o	o	o	x	x
玻璃	o	o	o	o	o	o

- : 表示不含有该有害物质。

o : 表示该有害物质在该部件所有均质材料中的含量均在IEC62321-2015规定的限量要求以下。

x : 表示该有害物质至少在该部件的某一均质材料中的含量超出IEC62321-2015规定的限量要求。

KNX总线定义

KNX	KNX 电缆
-	黑
+	红

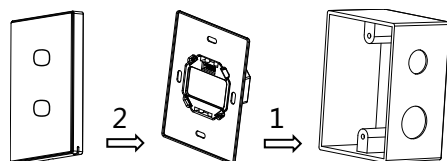


Figure 12. iTouch Panel
图 12. 简约S/面板

Figure 11. Power interface
图 11. 电源底座

Figure 10. Wall box
图 10. 底盒

Figure 10 - 12. Installation
图 10 - 12. 安装图

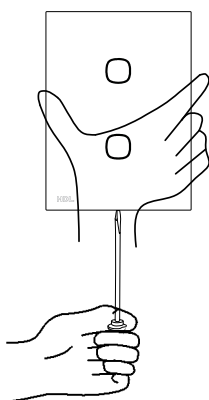


Figure 13. Disassembly
图 13. 拆卸图

技术支持

服务热线: 020-85820195

(工作时间: 9:00-12:00, 13:00-18:00, 星期一至星期五)

邮箱: kfb@hdlchina.com.cn

网址: http://www.hdlchina.com

Technical support

E-mail: support@hdlchina.com.cn

Website: https://www.hdlautomation.com

©Copyright by HDL Automation Co., Ltd. All rights reserved.
Specifications subject to change without notice.