

Optional DANTE Installation

Dealer Installed DANTE Card

The below pictures are of an Insight IA-8DSP, but the process is the same for all DSP amplifiers.

Overview of Process:

1. Update Amplifier with latest firmware from Wisdom Audio
2. Unplug from Power Outlet
3. Wait until Amber Light goes out
4. Remove top cover screws using Torx T10 Driver
5. Insert DANTE card into card slot
6. Reattach the top cover and any Rack Ears
7. OPTIONAL – Program DANTE Card with latest firmware

Note: This step is not normally required as cards should be preprogrammed. Only do this step if directed by Wisdom Audio

Required tools/Software:

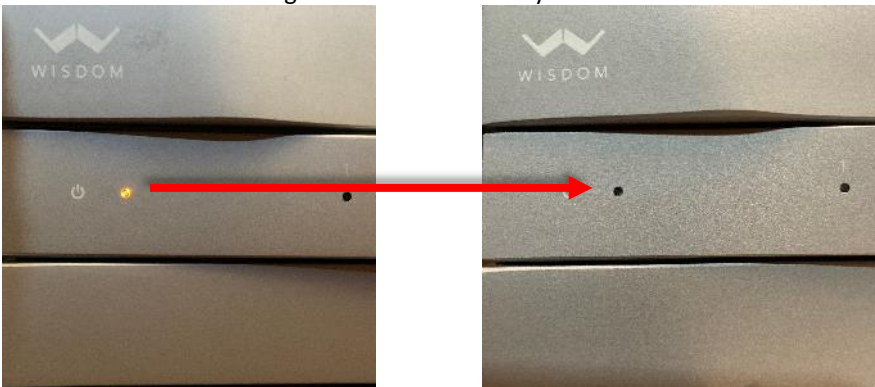
- Torx T10 (top cover screws)

Update Amplifier Firmware:

1. Check the www.WisdomAudio.com website for each product under **RESOURCES** for latest firmware update and instructions.
2. After updating to the latest version, the amplifier can be removed from the rack or system

Power Down and Remove Screws:

3. **Unplug the power cable from the rear panel and switch the unit into OFF position before beginning!!!**
4. Wait for Amber light to turn off. This may take several minutes for the light to remain off.



5. Unscrew the T10 Torx screws on the top cover (top and sides)

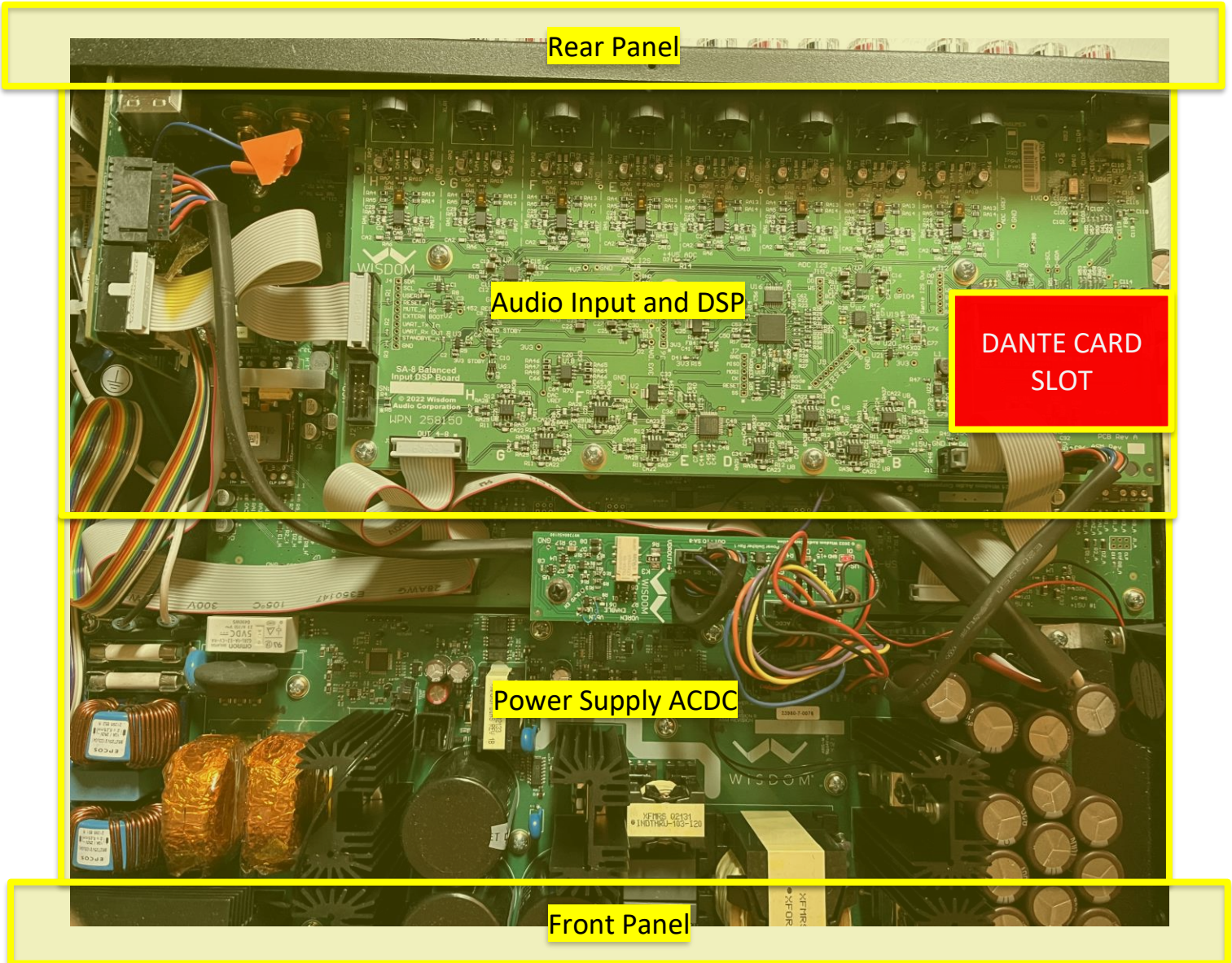


6. Remove the top cover of the and locate the DSP Board.

Internal View with cover removed→

Do Not Touch anything without first grounding yourself by touching the metal chassis of the amplifier.

<IA-8DSP>



<SW-1DSP>

Rear Panel

DANTE CARD
SLOT

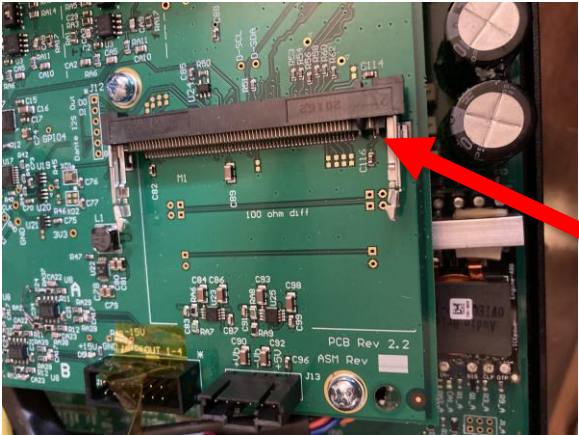
Audio Input and DSP

Power Supply ACDC

Front Panel

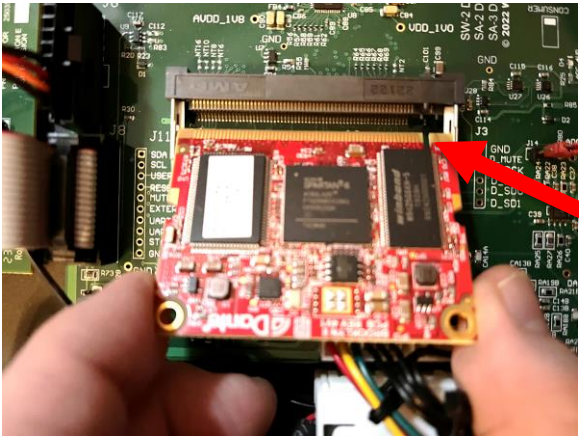
Installing the DANTE card

1. Identify open card slot



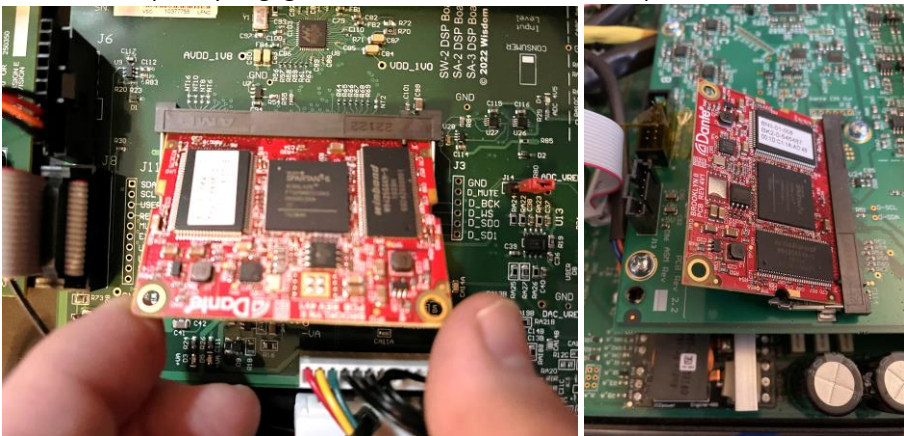
a.

2. Hold card by the edge angled slightly up and align with the notch in the card edge. The Dante logo will be facing up as shown below.



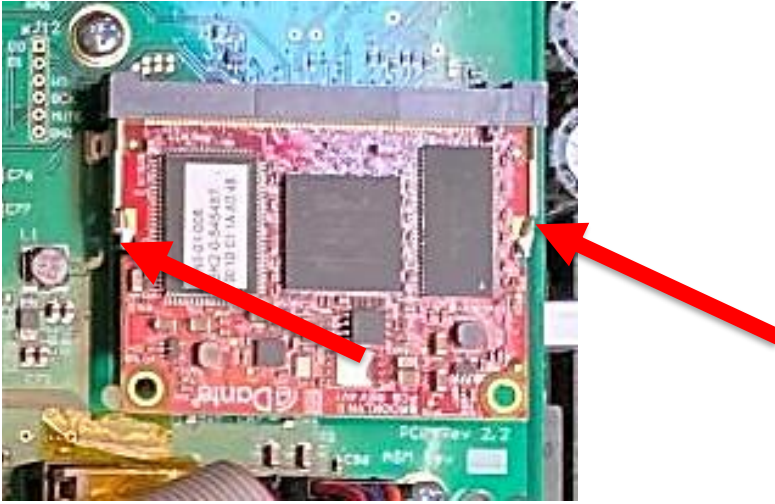
a.

3. Insert card fully into the slot. The Card can only be inserted one way. It should seat fully with only a slight amount of force and will stop once it is completely engaged in the slot. Make sure all the pins are inserted and seated.



a.

4. Push down on the card until the spring clips engage



a.

Programming / Software

NOTE: This is not normally required. The cards should come preprogrammed to work in any Wisdom Amplifier. This should only need to be done if the Dante card was delivered without programming.

Using the software should only be done under instructions from Wisdom Audio!

Required tools/Software:

- Audinate Dante Firmware Update Manager (Supplied by Wisdom Audio)
- Wisdom Audio Dante Firmware Image File - WisdomAmp_Dante.dnt (Supplied by Wisdom Audio)

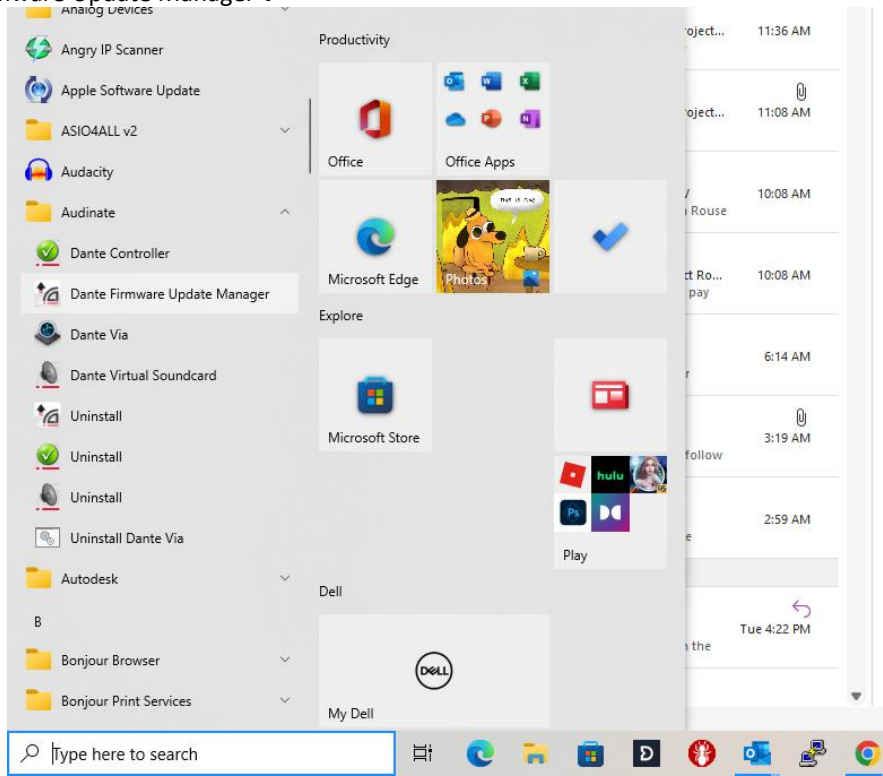
Important Notes:

- Multiple DANTE cards can be updated at the same time but it may be safer to do one at a time.
- Brooklyn 3 requires Dante Firmware Update Manager v 3.10.9.6 or newer
- Must be on the same switch or subnet on the router. **No WiFi!!!**
- **Install the Dante Firmware Update Manager from the Wisdom Audio supplied download link (link in email message)**

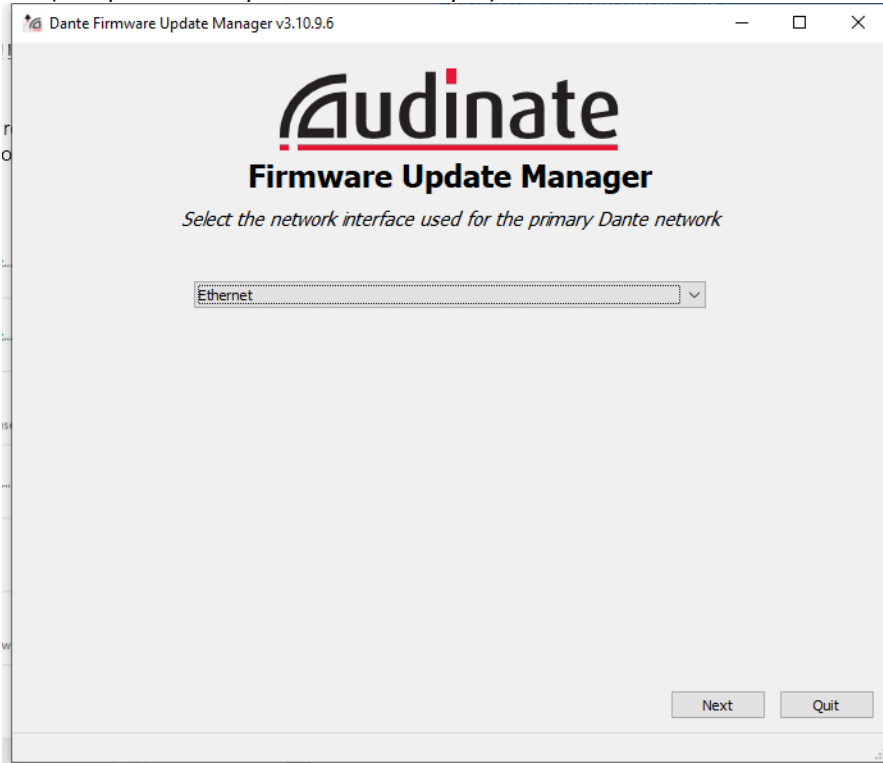
Step by Step Instructions:

1. After installing the Dante Card into the amplifier, power on the system.
2. Connect the DANTE port (not the SA-x DSP Ethernet) to the Network.
3. Connect the PC to the same router/switch using Ethernet (must be hardwire, not WiFi)
4. Check DANTE port for activity lights (yellow and green) on Ethernet, no activity = go back, something wrong!!!

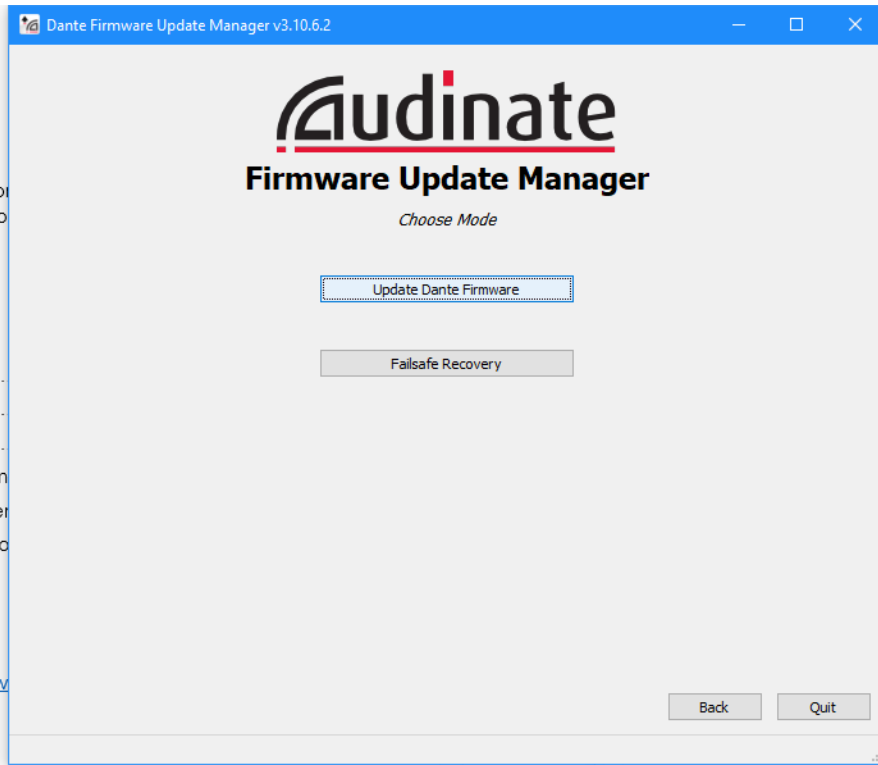
5. Open Dante Firmware Update Manager →



6. Select your network (or it picks the only one available for you) and click Next



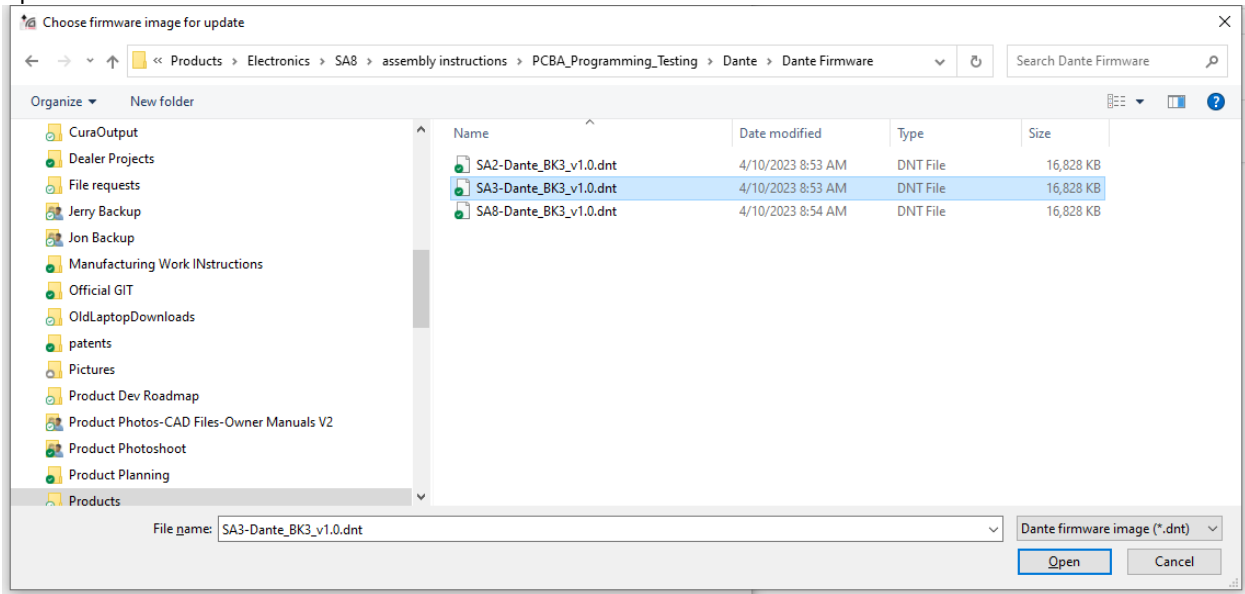
7. Select “Update Dante Firmware”



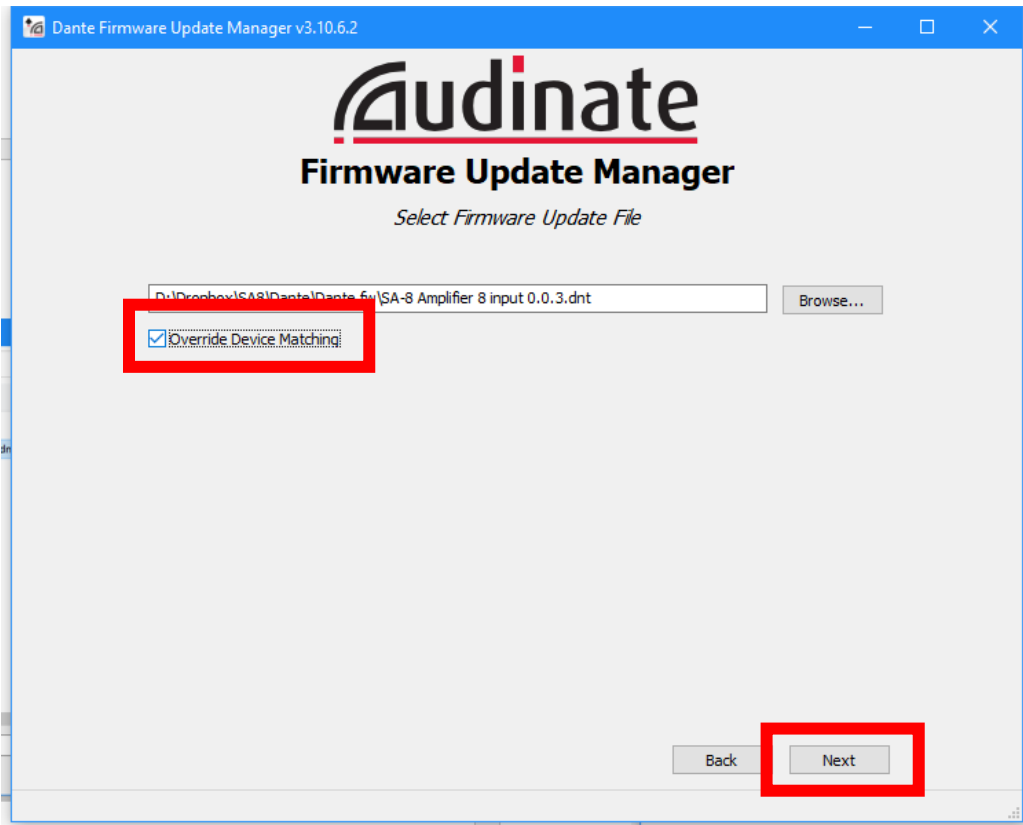
8. Browse for the firmware that was supplied to by Wisdom Audio and select it. The name may be different than the one shown here, but will be a .dnt file and will be sent from Wisdom.



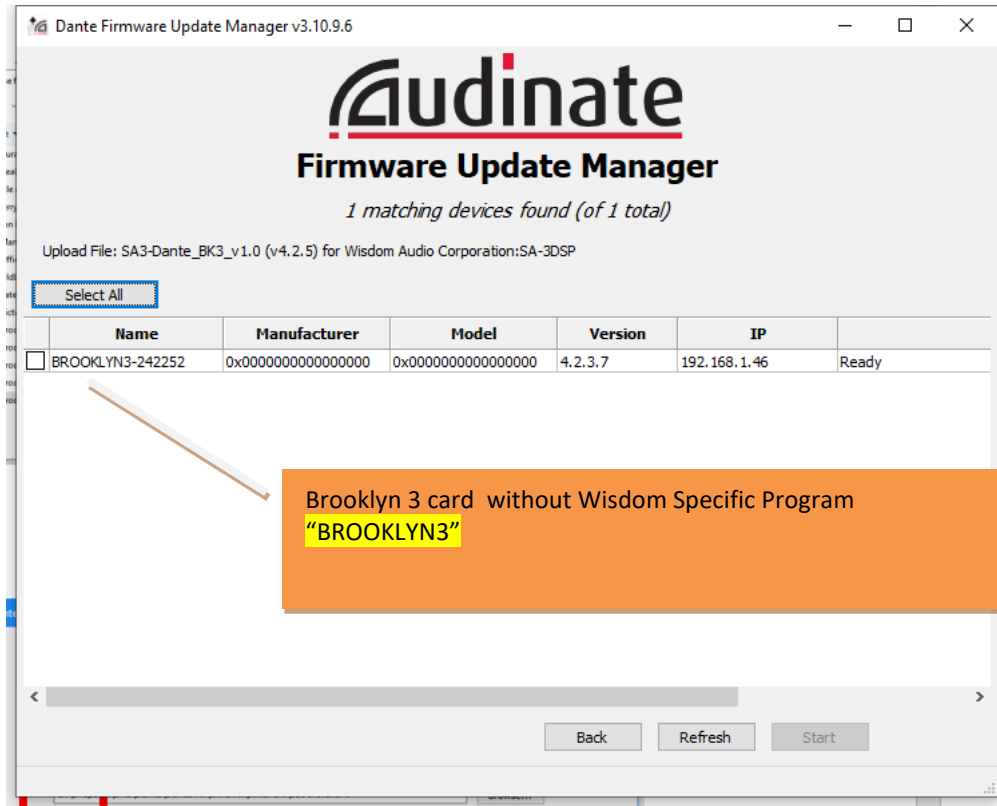
9. Open .dnt file for the unit



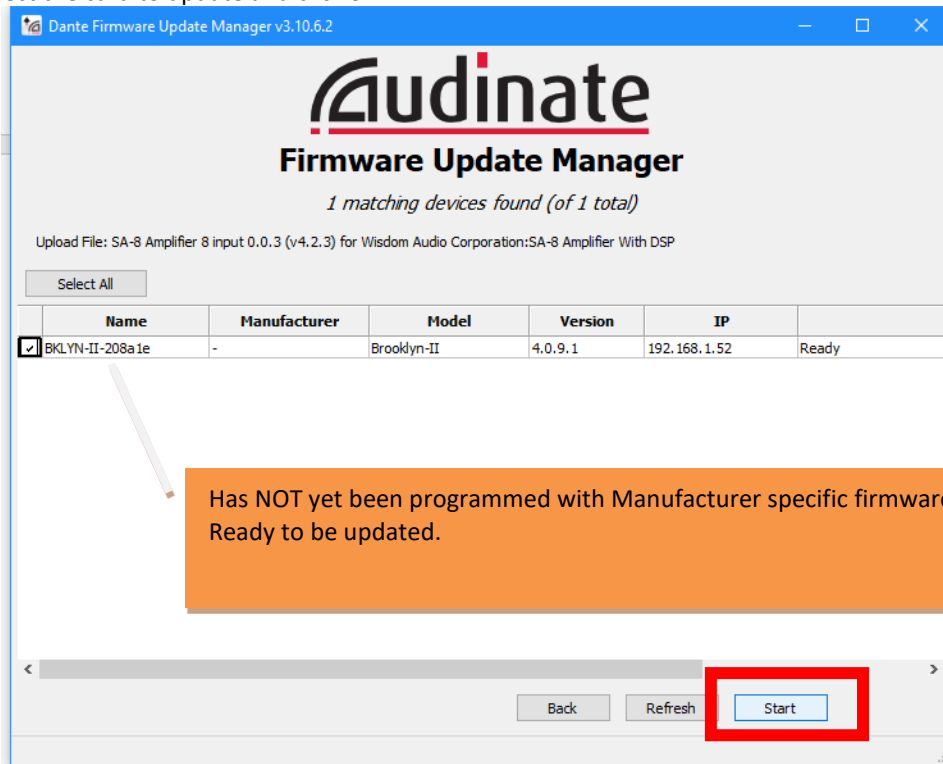
- **Select “Override Device Matching”.**
- Make sure that only the DANTE cards we want to update are on the network or make sure to select the correct units on the next page.
- Next



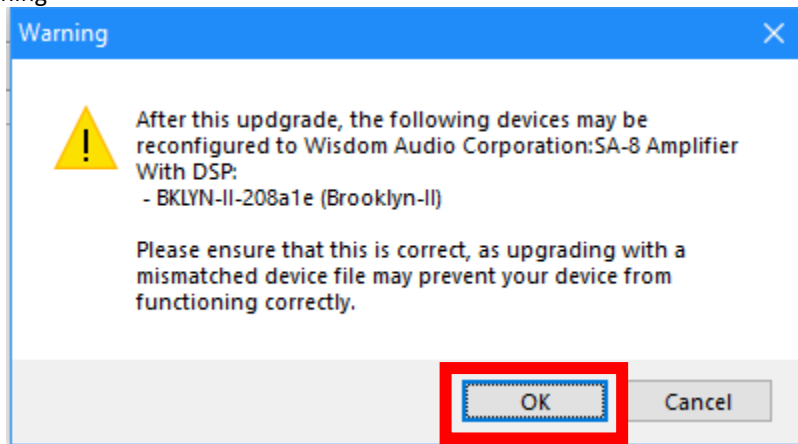
10. The software will scan the network for available cards. It will find all cards on the network, but only on the same subnet so it is important that they be on the same router or switch as the computer you are using!



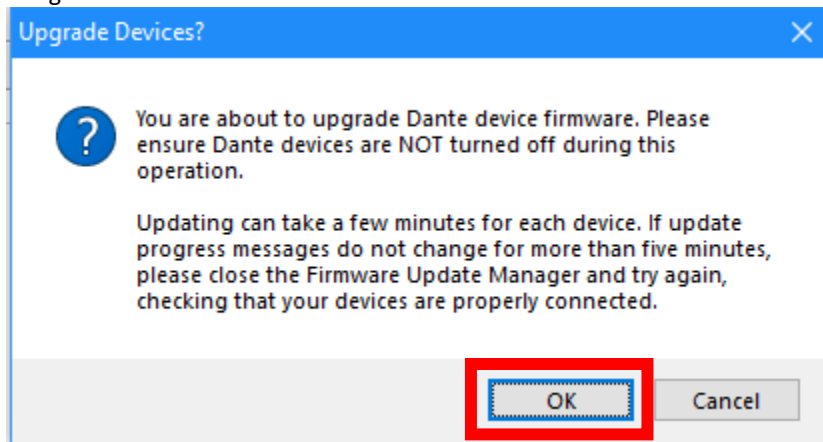
11. Check box select the card to update and click START



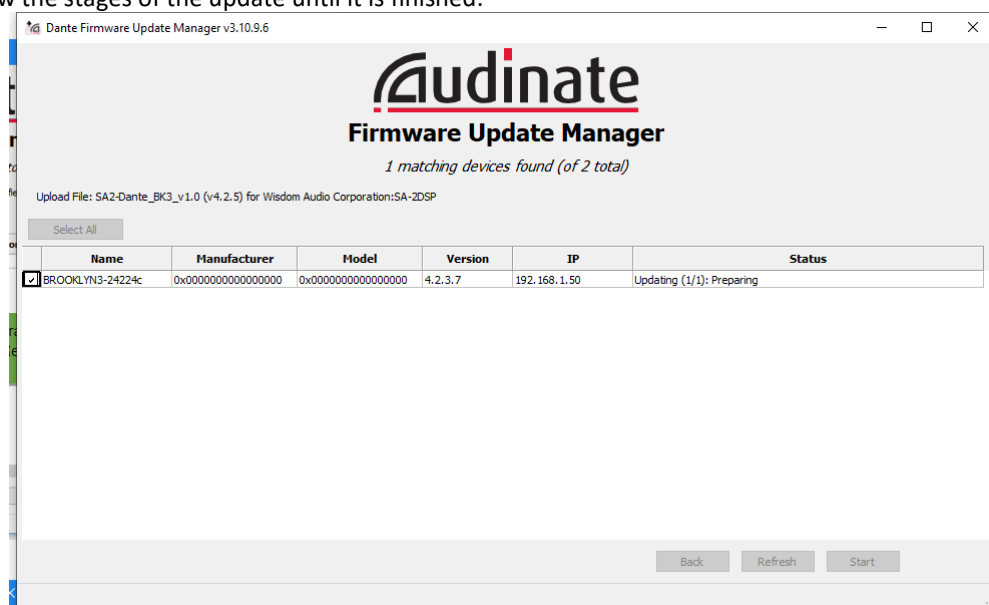
12. Press OK to this warning

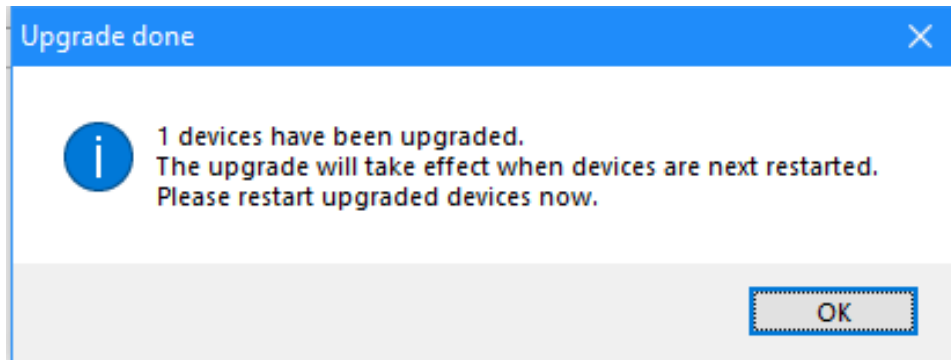
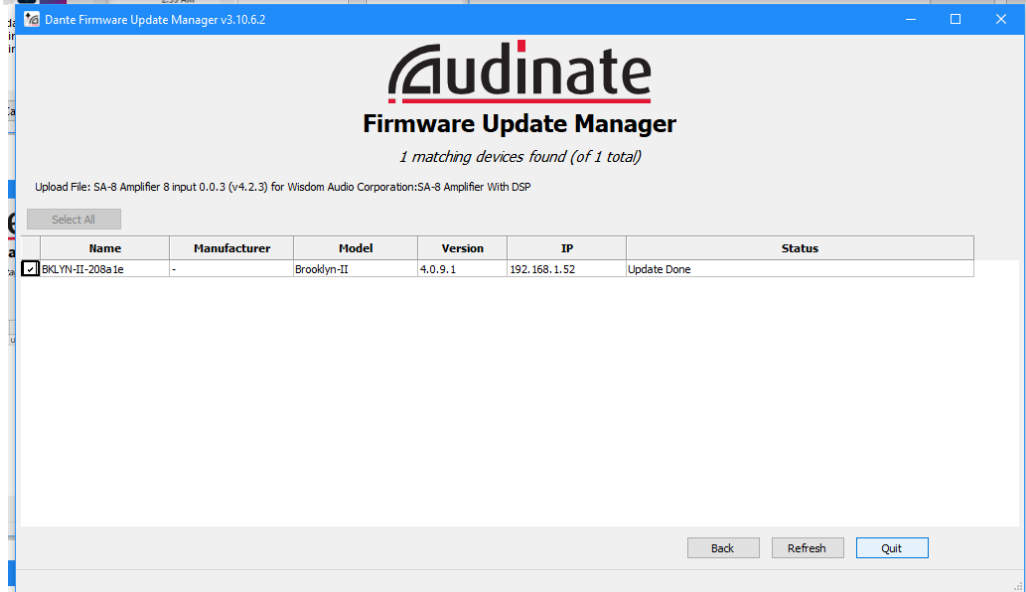
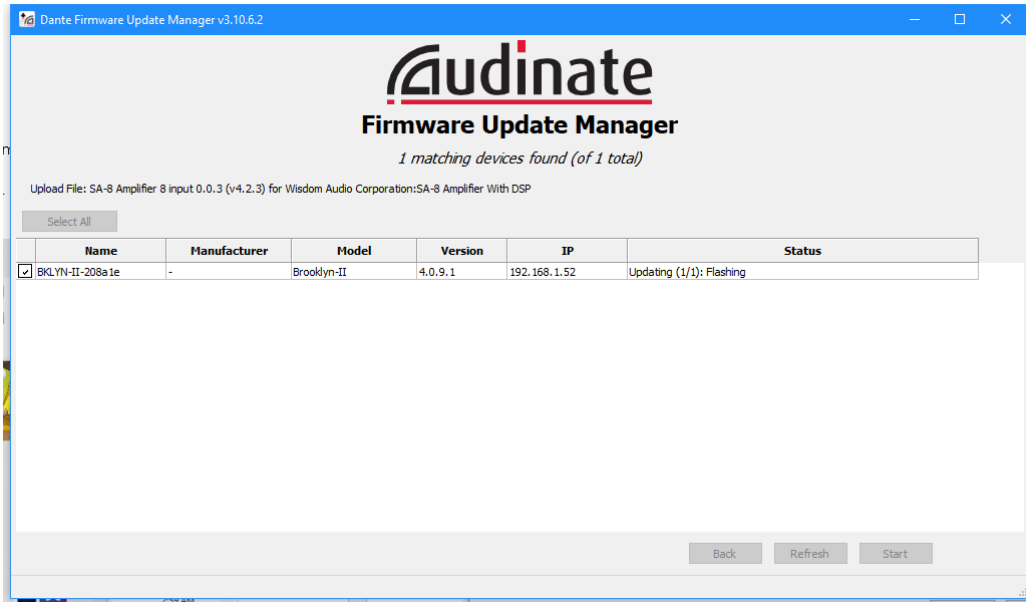


13. Press OK to this warning



The upgrade firmware loads the Wisdom Specific Firmware. This ensures we have the latest firmware on the device at all times. The display will show the stages of the update until it is finished:

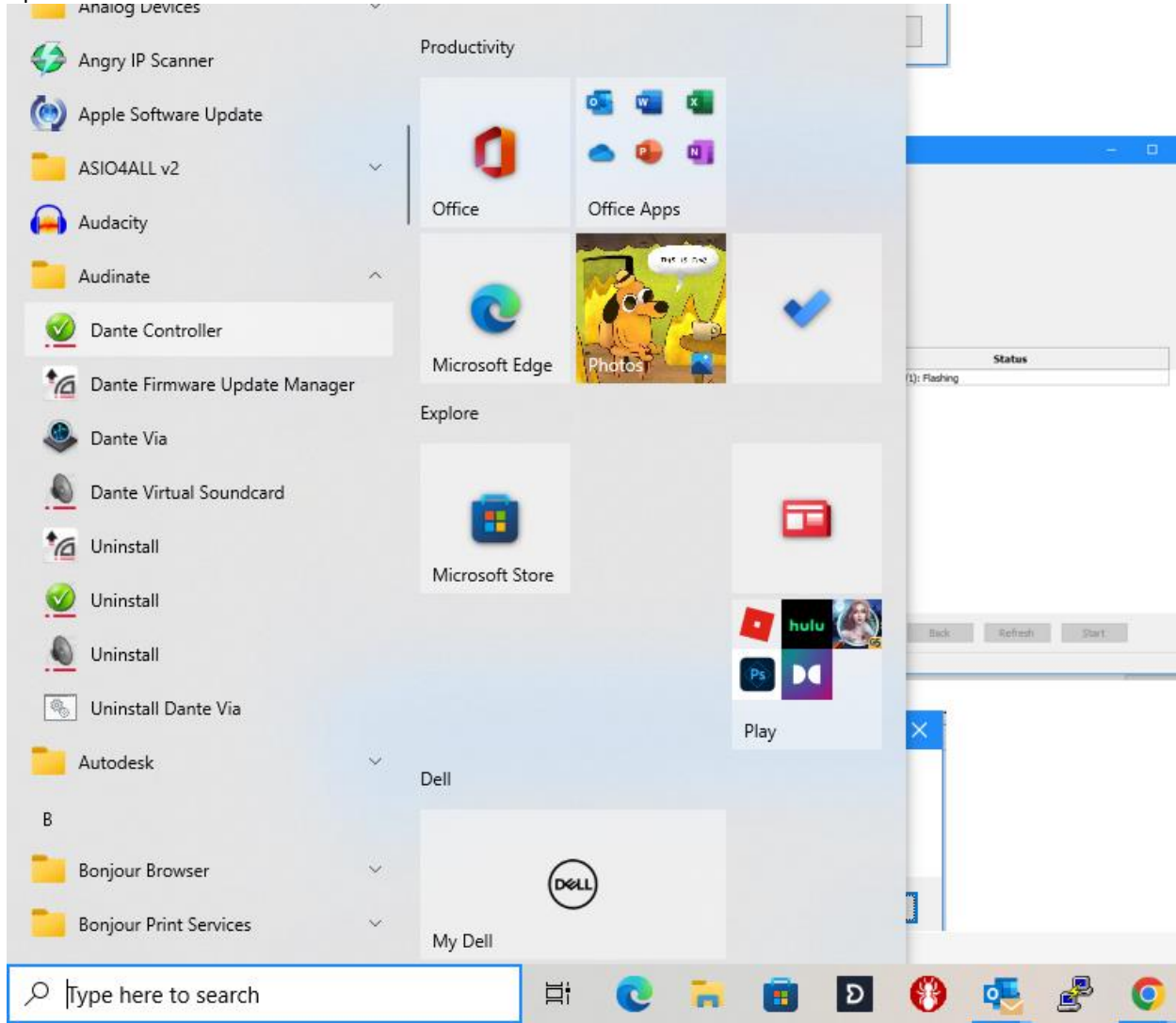




14. Reboot hardware by power cycling the amplifier.

15. Quit if done

Open Dante Controller



Device Info Tab shows list of hardware connected

The screenshot shows the Dante Controller software interface. The title bar reads "Dante Controller - Network View". The menu bar includes "File", "Devices", "View", and "Help". Below the menu bar is a toolbar with various icons. The main window is divided into several tabs: "Routing", "Device Info", "Clock Status", "Network Status", and "Events". The "Device Info" tab is active, displaying a table of connected hardware. The table has the following columns: "Device Name", "Model Name", "Product Version", "Dante Version", "Device Lock", "Primary Address", "Primary Link Speed", "Secondary Address", and "Secondary Link Speed". A single device is listed in the table. On the left side of the window, there is a search bar and a "Clear All" button. Below these are several expandable sections: "Device Lock", "Media Type", "Audio Sample Rate", "Sync to External", "Latency", "Subscriptions", "Tx Multicast Flows", "AES67", and "Sample Rate Pull-up". At the bottom of the window, there is a status bar with a "P:" indicator, a "1 devices" count, "Multicast Audio Bandwidth: 0bps", "Event Log:" indicator, and "Clock Status Monitor:" indicator.

Device Name	Model Name	Product Version	Dante Version	Device Lock	Primary Address	Primary Link Speed	Secondary Address	Secondary Link Speed
SA-8DSP-208a1e	SA-8 Amplifier With DSP	0.0.3	4.2.3.13	<input type="checkbox"/>	192.168.1.52	1Gbps	N/A	N/A