



# **Owner's Manual**

S10P

Small Footprint 500W Powered Subwoofer

# Table of Contents

1. Safety | 3
2. FCC Statement | 3
3. Introduction | 4
4. Overview | 4
5. Unpacking the S10P | 4
6. Rear Panel Features | 5
7. Setting Up your S10P | 6
8. DSP Control Via Rear Panel (User Level) | 7
9. Up/Down-Firing Setup | 8
10. Placement and Installation | 9
11. Cleaning and Care | 10
12. North American Warranty | 11
13. Obtaining Service | 12
14. Specifications | 13

## DOCUMENT CONVENTIONS

This document contains general safety, installation, and operation instructions for the Wisdom Audio S10P Small Imprint Subwoofer. It is important to read this document before attempting to use this product. Pay particular attention to:

**WARNING:** Calls attention to a procedure, practice, condition or the like that, if not correctly performed or adhered to, could result in injury or death.

**CAUTION:** Calls attention to a procedure, practice, condition or the like that, if not correctly performed or adhered to, could result in damage to or destruction of part of or the entire product.

*Note:* Calls attention to information that aids in the installation or operation of the product.

# Safety

1. Read these instructions.
2. Keep these instructions.
3. Heed all warnings.
4. Follow all instructions.
5. Do not use this apparatus near water.
6. Clean only with dry cloth.
7. Do not block any ventilation openings. Install in accordance with the manufacturer's instructions.
8. Do not install near any heat sources such as radiators, heat registers, stoves, or other apparatus (including amplifiers) that produce heat.
9. Do not defeat the safety purpose of any polarized or grounding-type plug. A polarized plug has two blades with one wider than the other. A grounding type plug has two prongs and a third grounding point. The wide blade or the third prong are provided for your safety. If the provided plug does not fit into your outlet, consult an electrician for replacement of the obsolete outlet.
10. Protect the power cord from being walked on or pinched particularly at plugs, convenience receptacles, and the point where they exit from the apparatus.
11. Only use attachments/accessories specified by the manufacturer.
12. Use only with the cart, stand, tripod, bracket, or table specified by the manufacturer, or sold with the apparatus. When a cart is used, use caution when moving the cart/apparatus combination to avoid injury from tip-over.
13. Unplug this apparatus during lightning storms or when unused for long periods of time.
14. Refer all servicing to qualified service personnel. Servicing is required when the apparatus has been damaged in any way, such as power-supply cord or plug is damaged, liquid has been spilled or objects have fallen into the apparatus, the apparatus has been exposed to rain or moisture, does not operate normally, or has been dropped.
15. **WARNING:** To reduce the risk of fire or electric shock, this apparatus should not be exposed to rain or moisture and objects filled with liquids, such as vases, should not be placed on this apparatus.
16. To completely disconnect this equipment from the mains, disconnect the power supply cord plug from the receptacle.
17. The mains plug of the power supply cord shall remain readily operable.

## IMPORTANT SAFETY INSTRUCTIONS

To reduce the risk of electric shock, do not remove cover. No user serviceable parts inside. Refer servicing to qualified personnel. To reduce the risk of fire and shock do not expose unit to rain or moisture. The unit should be connected to an earth grounded AC electrical socket. The unit should be operated in a well ventilated area. Minimum clearance is 2 inches from the ventilation openings.



## FCC Statement

This device complies with Part 15 of the FCC Rules. Operation is subject to the following two conditions:

1. This device may not cause harmful interference, and
2. This device must accept any interference received, including interference that may cause undesired operation.

## Introduction

Congratulations on purchasing your Wisdom Audio subwoofer. The S10P delivers tremendous bass performance in terms of depth, dynamics, and distortion, resulting in articulate bass that integrates seamlessly with high-resolution main speakers such as Wisdom Audio's Insight Series On-Wall models.

This manual focuses on the S10P subwoofer itself. Additional information can be found on the [Wisdom Audio website](#), including advanced operation of the DSP amplifier.

## Overview

The S10P is a versatile 10" Powered Subwoofer with an integrated 500W DSP amplifier that produces powerful clean bass from an incredibly compact cabinet. It is finished in luxurious high gloss piano black and is convertible from a freestanding upright to down-firing or up-firing horizontal platform, allowing the S10P to easily be placed behind, beneath, or beside sofas or cabinets. The ultra-compact design also lends itself to multi-subwoofer layouts for improved bass performance.

At only 7.6" (193mm) deep, including power cable, the stylish S10P is discreet and easy to install. Its versatility and flexibility are increased through the use of 3 summing stereo input options, XLR, RCA, and ¼" TRS. These inputs are passed to stereo XLR and RCA outputs via DSP channels that can be configured with high-pass filters and delay (default is flat with zero delay).

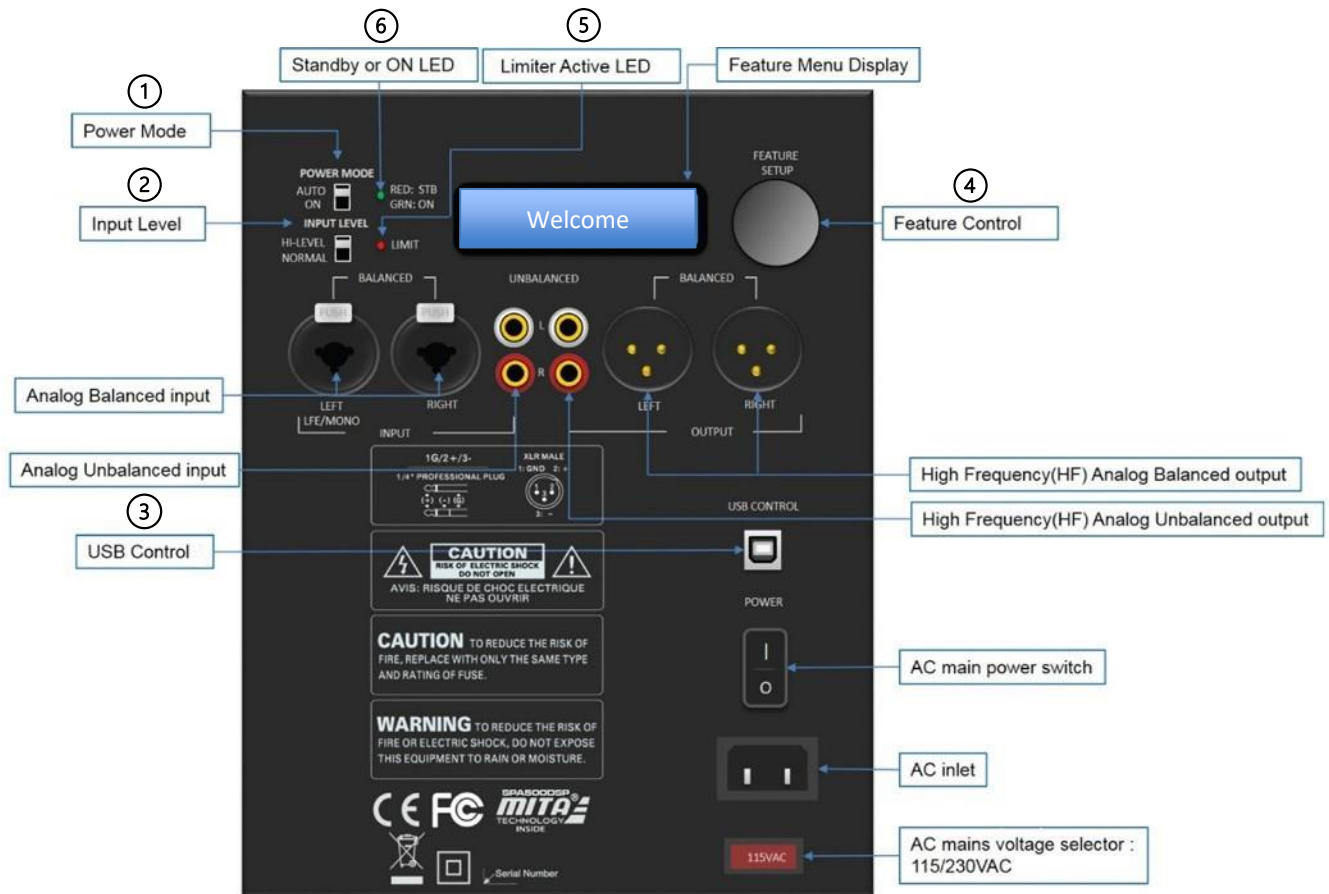
## Unpacking the S10P

**After unpacking your S10P, keep all packing materials for future transport.** If you need to ship your subwoofer, only the original, purpose-designed shipping carton is acceptable. Any other method of shipping this product runs a significant risk of damage to the subwoofer – damage that would not be covered by the warranty. (If you lose your packaging and need to ship your subwoofer, replacement packaging can be purchased from Wisdom Audio.) See the "Obtaining Service" section of this product manual.

### CAUTION

We **DO NOT** recommend lifting the S10P subwoofer by yourself. Unpacking this subwoofer is a two-person job. Exercise caution and avoid bending or twisting from the waist. Use your legs for lifting, not your back.

## Rear Panel Features



- ① Power Mode:** Select either **AUTO** or **ON** (always-on) power mode.

  - **Auto:** Amp turns on when signal is detected. It goes into standby after 20 minutes with no input signal.\*
  - **On:** Amp is always on, regardless of input signal status.

\* Once audio signal is detected, the amp will automatically turn on in typically one second or less.
- ② Input Level:** Affects analog balanced and unbalanced inputs only.

  - **Hi Level:** Attenuates input signal by -6dB.
  - **Normal:** No attenuation. (Default)
- ③ USB Control:** **THIS IS AN ADVANCED FEATURE AND NOT NEEDED FOR NORMAL USE. See website for more information on the use of this feature.**

  - Used for PC-GUI communication with custom PC software included with your subwoofer.
- ④ Feature Control:** **THIS IS AN ADVANCED FEATURE AND NOT NEEDED FOR NORMAL USE**

  - Rotary control with single & double-click actuation.
  - Rotate to navigate feature menu and change selection. [Volume, High Pass, Low Pass, Phase, High-pass Delay, Subsonic Filter, PEQ (Parametric Equalizer), Preset Save/Load]
  - Pressing once activates displayed function or exits the selected function.
  - Pressing twice exits operation or returns to the home position.
- ⑤ Limiter LED:** Lit when Limiter is active (Red).
- ⑥ Standby/On LED:**

  - **Red:** Amp is in energy saving “stand by” state.
  - **Green:** Amp is “ON” and operating normally.

## Setting Up your S10P

The S10P is setup to work with any standard AV Receiver or Surround Preamp/Processor when using the “LFE” or “Subwoofer” outputs. It will reproduce the low frequency effects and any audio from bass management of the processor to which it is connected (assuming speaker settings within the processor are set to small). The S10P is Plug-and-Play, meaning it comes pre-configured to reproduce output if signal is present at the input.

**No changes in configuration are required to begin enjoying your S10P.**

### BASIC SETUP AND CONNECTIONS

1. Connect the mains power. The unit is factory set for the proper voltage.
2. Connect the audio input,
  - a. Use either the unbalanced RCA input or Balanced XLR
  - b. For Mono input use the LEFT input only
  - c. For Stereo input use LEFT and RIGHT
3. Switch on the AC Main Power Switch
4. The S10P will start up and the LED will light to show status:
  - **Red:** Amp is in energy saving “stand by” state
  - **Green:** Amp is on and operating normally

**RECOMMENDATION:** We recommend using the S10P with the default settings as shipped:

- Power Mode = AUTO
- Input Level = NORMAL
- Factory Defaults for S10P speaker EQ (no change needed)

## DSP Control Via Rear Panel (User Level)

Activate the rear-panel **Feature Menu** by pressing the Feature Control knob. “**VOLUME**” is the default Feature displayed after power up. The Feature Menu will time-out after approximately 3 minutes of inactivity.



**Rotate** the knob to **Step** through the Features listed below. Rotation of the knob is also used to change the parameters of the selected Feature.

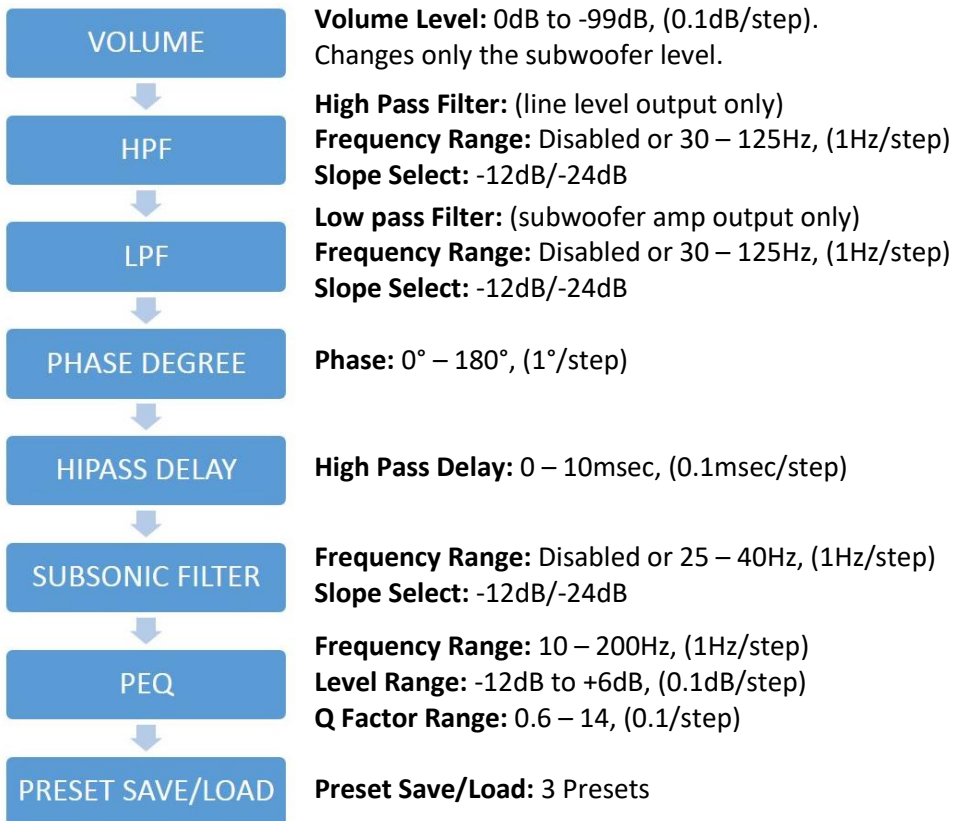


**Press** the control knob to **Enter** the displayed Feature. Rotation of the knob allows for the parameter changes listed below. (A complete [Feature Flow Chart](#) with their operations is listed on the last page.)



**Double Press** the control knob to **Exit** the Feature. A single press can also be used to exit some Features.

### MENU Selections



**NOTE:** The rear panel control is defeated when the subwoofer is linked to a PC. Unplug the USB cable to return control to rear panel.

Restoring Factory Defaults does not erase the 3 User Presets.

Changes are applied in real-time. No confirmation or save is required except for Presets 1-3.

## Up/Down-Firing Setup

The small footprint of the S10P allows it to be used effectively in many situations where a more conventional “bass cube” would be either cumbersome or impossible. Examples include locating it behind a couch, in the small space between a couch and wall, lying flat under a set of risers, under a couch/table, within a cabinet, or beneath a bed.

Your S10P subwoofer can be used in a down-firing or up-firing configuration, allowing it to be installed in more locations. We recommend down-firing as the preferred horizontal platform configuration. Converting it is done in 7 simple steps. **When completed, ensure that all the screws are installed and there are no holes in the cabinet creating air leaks.**

1. Lay the subwoofer on a soft surface (carpet or similar) making sure you have access to the feet and the front or rear (whichever surface the feet will be mounted). **DO NOT** lay the subwoofer directly on the amplifier or its controls. Doing so can damage it. The foam and cloth wrap from the packaging can be used to support the speaker and prevent it from being scratched or damaged.
2. Use a 5mm Hex key/Allen wrench to remove the four 20mm screws from the surface where the feet will be mounted. This will become the new bottom of the subwoofer. For the down-firing configuration it is necessary to remove the grille.

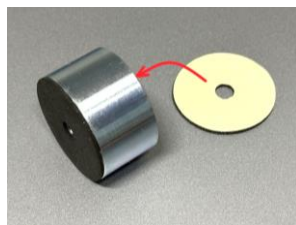


3. Use a 5mm Hex key/Allen wrench to remove the four 30mm screws that mount the rubber feet to the bottom of the subwoofer.





4. Attach the gaskets to the 4 metal spacers (included in the accessories) by peeling the backing from the gaskets and pressing them onto the two sides. Use care to center the gaskets.



5. Install the four feet with the four metal spacers onto the surface that will now become the bottom of the subwoofer. Pass the 55mm screws (included in the accessories) through the rubber feet and then through the metal spacers, (see photo below). Tighten the screws using a 5mm Hex key/Allen Wrench. The gaskets are used to ensure the high gloss finish of the subwoofer is not scratched.



6. Use a metric 5mm Hex key/Allen Wrench to re-install the four 20mm screws into the holes where the rubber feet were factory installed.
7. **NOTE: Ensure that screws are securely installed in all the holes of the enclosure!**

## Placement and Installation

Subwoofers offer flexibility in placement since the frequencies they reproduce are not readily localizable by the human ear. This is because the wavelengths they reproduce are more than 10 feet (three meters) long and do not contribute meaningfully to the imaging that the main speakers create. However, this fact does not mean that the placement of the subwoofers has no effect on the sound quality in the room. Far from it. Low frequencies and thus Subwoofers suffer from response irregularities created by the room itself, operating, as they do, below approximately 80 Hz in most systems.

Recent research into speaker placement has concluded that proper placement of two or more smaller subwoofers in a room can have significant advantages over a single large woofer. If you have the luxury of doing so, this can reduce a room's response irregularities from 20 decibels down to as little as 6-8 decibels – a tremendous improvement.

## **Cleaning and Care**

Cleaning your subwoofer enclosure can be done using a clean, soft-cotton or microfiber cloth using a gentle circular motion. Fingerprints or other contaminants can be removed from the high-gloss surface using a damp cloth with mild detergent or glass cleaner following the manufacturer's instructions. Cleaning agents should only be applied to the cloth, not the subwoofer. Do not apply any liquids directly onto the cabinet or the rear-panel electronics. Do not use any liquids for cleaning the rear-panel electronics.

Your S10P subwoofer is maintenance-free. However, care should be taken to avoid placing your subwoofer in direct sunlight or near any heat sources. Ensure all electrical cables are secured and don't present a tripping hazard. Please contact your Wisdom Audio dealer with any specific questions.

# North American Warranty

## Standard Warranty

When purchased from and installed by an authorized Wisdom Audio dealer, Wisdom Audio loudspeakers are warranted to be free from defects in material and workmanship under normal use for a period of 10 years from the original date of purchase on the cabinet and passive drivers.

**IMPORTANT:** Wisdom Audio loudspeakers are designed for installation and operation in environmentally controlled conditions, such as are found in normal residential environments. When used in harsh conditions such as outdoors or in marine applications, the warranty is three years from the original date of purchase.

During the warranty period, any Wisdom Audio products exhibiting defects in materials and/or workmanship will be repaired or replaced, at our option, without charge for either parts or labor, at our factory. The warranty will not apply to any Wisdom Audio product that has been misused, abused, altered, or installed and calibrated by anyone other than an authorized Wisdom Audio dealer.

Any Wisdom Audio product not performing satisfactorily may be returned to the factory for evaluation. Return authorization must first be obtained by either calling or writing the factory prior to shipping the component. The factory will pay for return shipping charges only if the component is found to be defective as mentioned above. There are other stipulations that may apply to shipping charges.

There is no other express warranty on Wisdom Audio products. Neither this warranty nor any other warranty, express or implied, including any implied warranties of merchantability or fitness, shall extend beyond the warranty period. No responsibility is assumed for any incidental or consequential damages. Some states do not allow limitations on how long an implied warranty lasts and other states do not allow the exclusion or limitation of incidental or consequential damages, so the above limitation or exclusion may not apply to you.

This warranty gives you specific legal rights, and you may also have other rights, which vary from state to state. This warranty is applicable in the United States and Canada only. Outside of the U.S. and Canada, please contact your local, authorized Wisdom Audio distributor for warranty and service information.

## Obtaining Service

We take great pride in our dealers. Experience, dedication, and integrity make these professionals ideally suited to assist with our customers' service needs.

If your Wisdom Audio loudspeaker must be serviced, please contact your dealer. Your dealer will then decide whether the problem can be remedied locally, or whether to contact Wisdom Audio for further service information or parts, or to obtain a Return Authorization. The Wisdom Audio Service Department works closely with your dealer to solve your service needs expediently.

**IMPORTANT:** Return authorization must be obtained from Wisdom Audio's Service Department BEFORE a unit is shipped for service.

It is extremely important that information about a problem be explicit and complete. A specific, comprehensive description of the problem helps your dealer and the Wisdom Audio Service Department locate and repair the difficulty as quickly as possible.

A copy of the original bill of sale will serve to verify warranty status. Please include it with the unit when it is brought in for warranty service.

**WARNING:** All returned units must be packaged in their original packaging, and the proper return authorization numbers must be marked on the outer carton for identification. Shipping the unit in improper packaging may void the warranty, as Wisdom Audio cannot be responsible for the resulting shipping damage.

Your dealer can order a new set of shipping materials for you if you need to ship your loudspeaker and no longer have the original materials. There will be a charge for this service. We strongly recommend saving all packing materials in case you need to ship your unit someday.

If the packaging to protect the unit is, in our opinion or that of our dealer, inadequate to protect the unit, we reserve the right to repackage it for return shipment at the owner's expense. Neither Wisdom Audio nor your dealer can be responsible for shipping damage due to improper (that is, non-original) packaging.

## Specifications

All specifications are subject to change at any time to improve the product.

Amplifier Power	<ul style="list-style-type: none"><li>• 500W [100Hz @115VAC, Input: -10dBV (L+R), 3 seconds on, 3 seconds off test]</li></ul>
Amplifier Gain	<ul style="list-style-type: none"><li>• +43.0dB</li></ul>
THD+N Ratio	<ul style="list-style-type: none"><li>• &lt; 1%, Rated Power @ 100Hz</li></ul>
Maximum SPL	<ul style="list-style-type: none"><li>• 114 dB</li></ul>
Auto ON sensitivity	<ul style="list-style-type: none"><li>• 3mV</li></ul>
Auto OFF time	<ul style="list-style-type: none"><li>• 20 minutes</li></ul>
Inputs	<ul style="list-style-type: none"><li>• Stereo XLR Balanced, Non-inverting, Pin 2 positive</li><li>• Stereo RCA Unbalanced</li></ul>
Outputs	<ul style="list-style-type: none"><li>• High Pass Stereo XLR Line Level</li><li>• High Pass Stereo RCA Line Level</li></ul>
Features	<ul style="list-style-type: none"><li>• Internal Low Pass and Parametric EQ (Subwoofer)</li><li>• Selectable High Pass Output with Delay (Line Level Output)</li><li>• Signal Sense Auto On/Off</li><li>• USB for PC GUI Advanced Setup</li></ul>
Power amplifier Protection	<ul style="list-style-type: none"><li>• A- Short-circuit</li><li>• B- Thermal protection</li><li>• C- Power Supply Protection</li></ul>
Power Consumption:	<ul style="list-style-type: none"><li>• 0.5W Standby Mode</li><li>• 7.5W On (Idle)</li><li>• 569W Rated Power</li></ul>
Product Weight	<ul style="list-style-type: none"><li>• 41 lbs. (18.6 kg) with grille</li></ul>
Product Dimensions – Height	<ul style="list-style-type: none"><li>• Upright including feet = 15.9" (40.4cm)</li><li>• Down-firing including feet = 7.8" (19.8cm) *</li></ul>
	<b>All Dimensions Below (Height x Width x Depth)</b>
Dimensions With Grille	<ul style="list-style-type: none"><li>• 15.9" x 15.3" x 6.9" (40.4cm x 38.9cm x 17.5cm) HxWxD*</li></ul>
Dimensions Without Grille	<ul style="list-style-type: none"><li>• 15.9" x 15.3" x 6.4" (40.4cm x 38.9cm x 16.3cm) HxWxD*</li></ul>
Dimensions Down firing w/feet	<ul style="list-style-type: none"><li>• 7.8" x 15.3" x 15.3" (19.8cm x 38.9cm x 38.9cm) HxWxD*</li></ul>
Mains Voltage Range	<ul style="list-style-type: none"><li>• 100V-120V, or 220-240V, 50Hz/60Hz – Switch selectable on the rear panel. Note: Mains Fuse must be changed if voltage is changed. (See below)</li></ul> <p><b>S10P is shipped pre-configured for destination country.</b></p>
Mains Fuse (FOR 115V ONLY)	<ul style="list-style-type: none"><li>• T6.3A H250V Ceramic (5x20mm) Slow Blow (115V ONLY)</li></ul>
Mains Fuse (FOR 230V ONLY)	<ul style="list-style-type: none"><li>• T3.15A H250V Ceramic (5x20mm) Slow Blow (230V ONLY)</li></ul>
Mains Input Connector	<ul style="list-style-type: none"><li>• IEC 60320 C18</li></ul>
Shipping Weight	<ul style="list-style-type: none"><li>• 50 lbs (23Kg)</li></ul>
Shipping Dimensions	<ul style="list-style-type: none"><li>• 21.25" x 20.25" x 12.5" (54cm x51.4cm x 31.8cm)</li></ul>

\* Allow additional 0.8" (35mm) for power cord and input wiring

For more information, see your Wisdom Audio dealer or contact: [info@wisdomaudio.com](mailto:info@wisdomaudio.com)



*WISDOM and the stylized W are registered trademarks of Wisdom Audio.*

Wisdom Audio 1572 College Parkway, Suite 164  
Carson City, Nevada 89706 USA  
TEL (775) 887-8850  
FAX (775) 887-8820  
[wisdomaudio.com](http://wisdomaudio.com)